

Contents

- 4 Acknowledgements
- 5 Preface by Jenefer Coates
- 7 Charlotte De Syllas : Sculptor in Gemstones
by Beatriz Chadour-Sampson

Independent Studio Work 1966–2016

- 11 Necklaces
- 33 Rings
- 49 Brooches
- 58 Earrings
- 61 Buckle and Torc
- 62 Bracelets
- 63 Cufflinks and Earrings

Student and Early Work 1963–1966

- 64 Necklaces
- 71 Brooch
- 72 Curriculum Vitae
- 75 Chronological Index

Independent Studio Work 1966–2016

V&A Shell Necklace

Commissioned by the Victoria & Albert Museum, London, for their permanent collection, this necklace is displayed in their Jewellery Gallery. The shell forms are created from several pieces joined together with silver lacquer, a technique borrowed from the traditional Korean method for repairing pottery. The natural orange crust of the white Burmese jadeite was integrated into the carving of the long shell. The seed pearls are threaded onto silk dyed to echo the colours of the carved shells.

1990: Green nephrite jade, white jadeite jade, coral, pearls, silk. Length: 355 mm. Photo © David Cripps



Millennium Bracelet



Commissioned by The Worshipful Company of Goldsmiths for its Millennium Exhibition 'Treasures of the 20th Century' as part of the display of its renowned collection of modern jewellery. The design needed to be striking as this bracelet would live as an exhibition piece and rarely be worn. The quality of both jades is exceptional, the white from Russia, the black from Wyoming, USA.

2000: White nephrite jade, black nephrite jade, 18ct white gold, stainless steel springs

H: 37 mm W: 78 x 70 mm. Photos: Clarissa Bruce, Ian Haigh
Collection: The Worshipful Company of Goldsmiths

Bobby's Ring



This ring was my first major commission, and it came from an architect for his wife. Although the design followed my own ideas, it was pleasing to hear later that the ring and its box symbolized particular personal things for the client himself. Combining the technical, the aesthetic and the personal in an original design came to be my aim in all future work.
1969: Grey chalcedony, 18ct yellow gold
 H: 40 mm W: 18 mm D: 25 mm

The box for Bobby's Ring was essentially a second piece of work. Originally gold leafed on the outside with white gold leaf inside, it sadly wore badly when handled. The gilding recalled the Ancient Greek practice of embellishing sculptures and was meant to match the exuberant character of the client, while the quiet head was for her husband. The box folds out to remove the ring.
1969: Partridge wood, silver hinge
 H: 60 mm W: 50 mm D: 65 mm

Tulip Ring



One of two rings commissioned by a father for his two daughters' 21st birthdays. One daughter, who had wonderful red hair and loved to wear red, chose this exceptional Nigerian red tourmaline.

2003: Red tourmaline, 22ct red gold
H: 30 mm W: 27 mm D: 26 mm. Photo: Jasper Vaughan

Heliodor Twist Ring



Commissioned by a husband as a surprise for his wife's 60th birthday. Their daughter discreetly lent me a ring for sizing and we managed to keep the whole job secret until the birthday.

2002: Heliodor, 22ct yellow gold

H: 30 mm W: 34 mm D: 15 mm. Photo: © David Cripps

Frances's Ring



This ring was made for my sister-in-law, and as a special favour I agreed to include cut diamonds in the design.
2006: Blue topaz, diamond, 18ct white gold. H: 30 mm W: 22 mm D: 24 mm
Photos © David Cripps

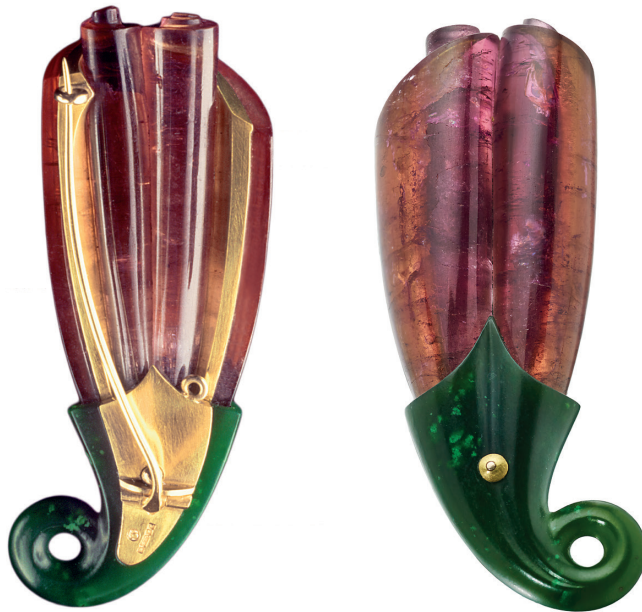
Sadie's Ring



Commissioned by the owner as her own 'non-wedding' ring. As she is an architect I made a very simple, smooth design.

2007: Green-blue tourmaline, 18ct white gold. H: 22 mm W: 32 mm D: 20 mm

Sea Plant Brooch



Made from an unusual pair of tourmaline crystals that had formed side by side, this brooch was also a first experiment in carving crackled tourmaline, which can easily shatter. The challenge was to fit the green Russian jade and tourmaline together in perfect union. This was achieved by adapting a technique learned from gunsmiths, called smoke fitting, which uses gouache paint instead of soot. The design is an intricate jigsaw of pieces held together by a single gold rivet at the front which is linked to two long supports in gold at the back.

1996: Red tourmaline, green nephrite jade, 22ct yellow gold. Pin 18ct gold L: 70 mm W: 12 mm

Photos © David Cripps, Simon B Armitt

Silver and Tourmaline Crystal Brooch



This aesthetic reflects my background. Although I do still like clean cut lines, they have in many ways been left behind as I explored a different aesthetic from the 1930s architecture favoured by my parents. Although there is an element of modernism in my designs, my forms are strongly inspired by nature. Integrating stone and metal started with this brooch, and it is still important in my designs for the stone and metal to form a single unified shape rather than have the stone set on top of metal which is merely acting as a frame. The simplicity of this piece still pleases me, as does the stained glass effect of rough crystals smoothed down to a flat surface.

1963–66: Silver, tourmaline. H: 50 mm W: 60 mm

Chronological Index

1963–66	Fused Silver, Gold Plate and Rough Topaz Necklace 67	1994	Lizzie's Ring 40
	Fused Silver, Rough Crystal Necklace 66		Wisteria Necklace 22
	Gold-plated French Knitted Wire Necklace 65	1996	Sea Plant Brooch 55
	Hinged Tourmaline and Silver Necklace 70	1999	Dale's Day Necklace 23
	Iron Pyrite, Silver and Pearl Necklace 64		Red Glass Bead Necklace 21
	Porcelain Soaked Lace Bead Necklace 68	2000	Memory Pendant 30
	Silver and Moonstone Necklace 69		Millennium Bracelet 48
	Silver and Tourmaline Crystal Brooch 71	2002	Angela's Earrings 58
1960s	Abalone Bracelet 62		Dale's Day Earrings 58
	Cufflinks in Damascus Steel Box 63		Heliodor Twist Ring 39
	Cuttlefish Buckle 61	2003	Tulip Ring 38
	Cuttlefish Cast Silver and Amber Torc 61	2004	Faceted Aquamarine Ring 40
	Damascus Steel Bracelet 62		Inked Water Beads 20
	Damascus Steel Earrings 63		Jellyfish Necklace 19
	Natural Diamond Ring 34	2005	Cacholong Necklace 16
	Silver and Gold Buttons 60		Fish Ring 41
	Silver Shell Earrings 60		Pauline's Twist Ring 41
1968	Cut Diamond Ring 34	2006	Flintman 28
1969	Bobby's Ring 33		Frances's Ring 42
1970	Coffee Bean Choker 27	2007	Dragonfly Brooch 54
	Ebony Hand Box 32		Sadie's Ring 42
	Eye Pendant 32		Twist Brooch 52
1972	Pip's Earrings 59	2008	Fish Brooch 53
1978	Anni's Necklace 26	2009	Bollinger Brooch 50
1981	Hand Earrings 59		Grass Ring 43
1985	Debbie's Ring 35		Migration Necklace 12
1986	Child's Fish Necklace 29		Tourmaline Twist Ring 43
1987	Perni's Pendant 31	2010	Twin Brooches 51
1988	Magpie Necklace 24	2012	Bud Ring 45
1990	Maeve's Brooch 57		Heliodor Curl 44
	Shell Choker 18		Ruby Pendant 17
	V&A Shell Necklace 11		Sophie's Jade Ring 46
1991	Diamond Eye Ring 35		Swift Brooch 49
	Star Sapphire Eye Ring 36		Tatlin Ring 44
1992	Hoopoe Bird Ring 37		Trumpet Necklace 17
	Lapis Scarf Ring 37	2013	Flight Necklace 13
	Leaf Brooch 56	2014	Pearl Necklace 14
		2015	Tree Ring 47

Title: Charlotte De Syllas, Jewellery in Carved Gemstones

First Published: Charlotte De Syllas UK 2016

www.charlottedesyllas.com

Copyright © 2016 Charlotte De Syllas

Text Copyright © Jenefer Coates, Beatriz Chadour-Sampson 2016

The moral rights of the authors have been asserted.

ISBN 978-1-5262-0161-4

Photographs copyright © Simon B Armitt, © Stephen Brayne,

© Clarissa Bruce, © Ian Haigh, © Jasper Vaughan,

© the Estate of David Cripps all rights reserved DACS

Printed in Belgium by Albe De Coker

Design: Kate Hepburn

Foreword: Beatriz Chadour-Sampson

Preface & Editor: Jenefer Coates

All rights reserved. No part of this publication may be reproduced, stored in a retrieval system or transmitted in any form or by any means, electronic, mechanical, photocopying, recording or otherwise without first seeking the written permission of the copyright owners and of the publisher.